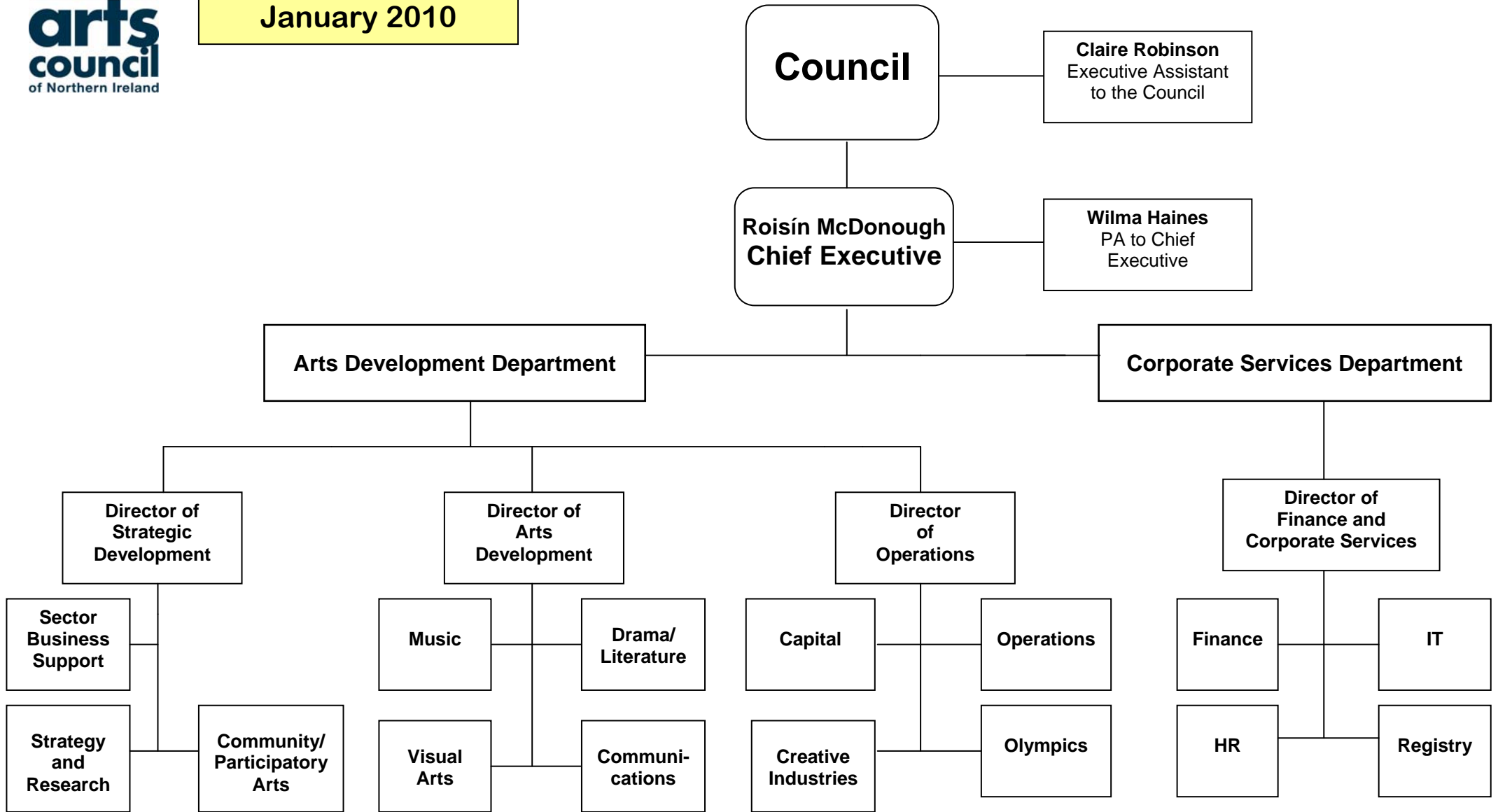




**Organisation Chart
January 2010**



Arts Development Department

Noirín McKinney
Director of
Arts Development

Nick Livingston
Director of
Strategic Development

Grainne McCann
Communications
Manager
(on maternity leave)

Matthew Hendry
Communications Officer

Sarah Coburn
Media Relations Officer

Jane McKee
Media and
Communications Officer
(part-time)

Fiona MacMillan
Public Affairs Officer
(part-time)

Marlyn Beck
Departmental Support
Officer

**Patricia
Curran**
Departmental
Support
Officer

Suzanne Lyle
Head of
Visual Arts

Joanna Harvey
ADO: Visual
Arts *(part-time)*

Deirdre Robb
ADO: Visual
Arts

**Anne
Shipton**
AADO

Rosa Solinas
Head of
Music

**Maria
McAlister**
ADO:
Traditional Arts
(inc Bands)

**Julie
McBride**
AADO

Damian Smyth
Head of Drama
& Literature

Gilly Campbell
ADO: Drama &
Dance

**Maria
O'Kane**
AADO

**Craig
Corsar**
AADO

Fionnuala Walsh
Head of Community/
Participatory Arts
(part-time)

**Joan Dempster/
Christabel Williamson**
ADO: Community Arts
(job share)

Gavin O'Connor
ADO: Youth Arts

Sonya Whitefield
Development Officer

**Debbie
Young**
AADO

Kate Keys
Sector Business
Development Manager

Graeme Stevenson
Research and
Policy Officer

Jackie Witherow
Policy Development
Officer

Vacancy
Research and
Policy Officer

Re-imaging
Ciara Shaw *(temporary)*
Ann Ward
Sara Shields *(on
maternity leave)*
Officers
Vacancy
Support Officer

ADO = Arts Development Officer
AADO = Assistant Arts Development Officer

Corporate Services Department

Vacancy
Director of Finance and
Corporate Services

Edel Bonar
Finance Manager

Ken Bartley
IT Manager

**Claire
Kilpatrick**
HR Officer
(part time)

Shanon Gillen
HR Officer
(temporary)

Linda Gallagher
Assistant Accountant

Martina Morrow
Assistant Finance
Officer

John Paul Fitzsimons
Assistant Finance
Officer

Aaron Mulholland
Student Placement

Francis Pill
IT Officer

Brian Byrne
E-Media Officer

Barry Hassan
Student
Placement

Anne Goodwin
Departmental
Support Officer

Joe Reilly
Registry Officer

Siobhan McDowell
Registry Officer
(part-time)

Toni Cully
Registry Officer
(part-time)

Jenny Gallon
Receptionist

Gordon Clark
Verification
Officer
(temporary)

Arts Development Department

Lorraine McDowell
Director of
Operations

Lorraine Calderwood
Capital Projects Officer

Maria Lynch
Operations Officer

Arts Support Officers:

Brendan Carson
Joanne Forsyth
Donna Hunter *(temporary)*
Carol Pearl *(temporary)*
Robert Stephenson

Edel Murphy
Small Grants
Programme Officer

Creative Industries

David McConnell
Greg Marrs
Officers

Kathryn Young
Support Officer

Cultural Olympiad

Cian Smyth
Creative Programmer
Marian Clark de Monreal
Legacy Trust UK
Programme Co-ordinator