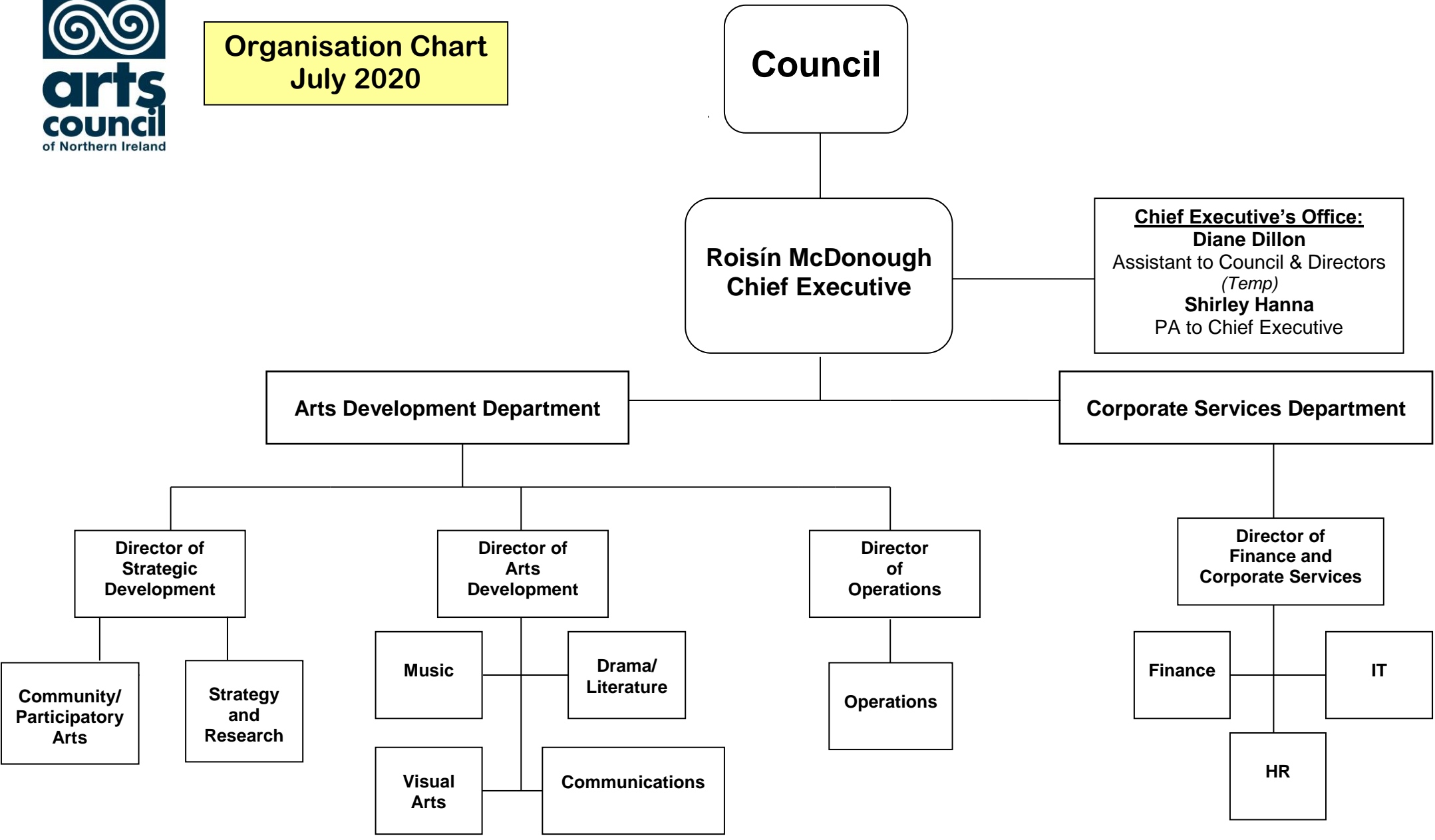




**Organisation Chart
July 2020**



Arts Development Department

Noirín McKinney
Director of
Arts Development

Director of
Strategic Development
Recruitment underway

Grainne McCann
Communications
Manager
(part-time)

Suzanne Lyle
Head of
Visual Arts

Ciaran Scullion
Head of
Music

Damian Smyth
Head of
Literature &
Drama

Gilly Campbell
Head of Community
Arts / Education
(including Disability Arts
and Arts & Health)

Matthew Hendry
Communications Officer

Sarah Coburn
Media Relations Officer
(part-time)

Angela Warren
Media and
Communications Officer

Leanne Magee
Digital Content Officer

Patricia Lavery
ADO: Visual Arts
Joanna Johnston
ADO: Visual Arts
(part-time)
(On maternity leave)
Jacqueline Barker
ADO: Visual Arts
(Temp p/t
maternity cover)

Robert Stephenson
AADO
(Temporary Cover)

Maria Mc Alister
ADO:
Traditional Arts
(inc Bands)
(Job share)
Joanne Wright
ADO:
Music
& Traditional
Arts
(Secondment)

Andrea McKittrick
AADO
Lisa Birkholz
(Secondment)

Caoileann Curry-Thompson
ADO: Drama &
Dance

Sonya Whitefield
Development
Officer

Roisin Murray
AADO

Lorraine Calderwood
ADO: Programmes
Officer

Lizzie Devlin
ADO: Community Arts
(part-time)

Gavin O'Connor
ADO: Youth Arts &
Safeguarding Officer

Anne Shipton
AADO

Ashleigh Lilley
Research and
Policy Officer

Matthew Malcolm
Creative Industries
Development Officer

Graeme Stevenson
Research and
Policy Officer

ADO = Arts Development Officer
AADO = Assistant Arts Development Officer

Corporate Services Department

Geoffrey Troughton
Director of Finance and
Corporate Services

James McCumiskey
Finance Manager

Linda Gallagher
Accountant

**John Paul
Fitzsimons**
Finance Officer

Christine Ferris
Finance Officer

**Shanon
Downey**
HR Manager
(part-time)

**Witney
Williamson**
HR Manager

Siobhan McDowell
Departmental
Support Officer
Corporate Services
(part-time)

Matthew Lindsay
Generalist IT
Officer
(Temp)

**Vincent
Crossey**
Office Manager

**Natasha
Goulden** (am)
**Heather
Hamilton** (pm)
Receptionists
(Temps)

Arts Development Department

Paul Harron
Director of
Operations

Maria Lynch
Temporary
Operations Manager

Arts Support Officers:
Patricia Curran
Joanne Forsyth
Olivia Gamble
(Temp)
Ciara Lavery *(Temp)*
Julie McBride